

PROJECT LOCATION MAP

TRIDENT SEAFOODS

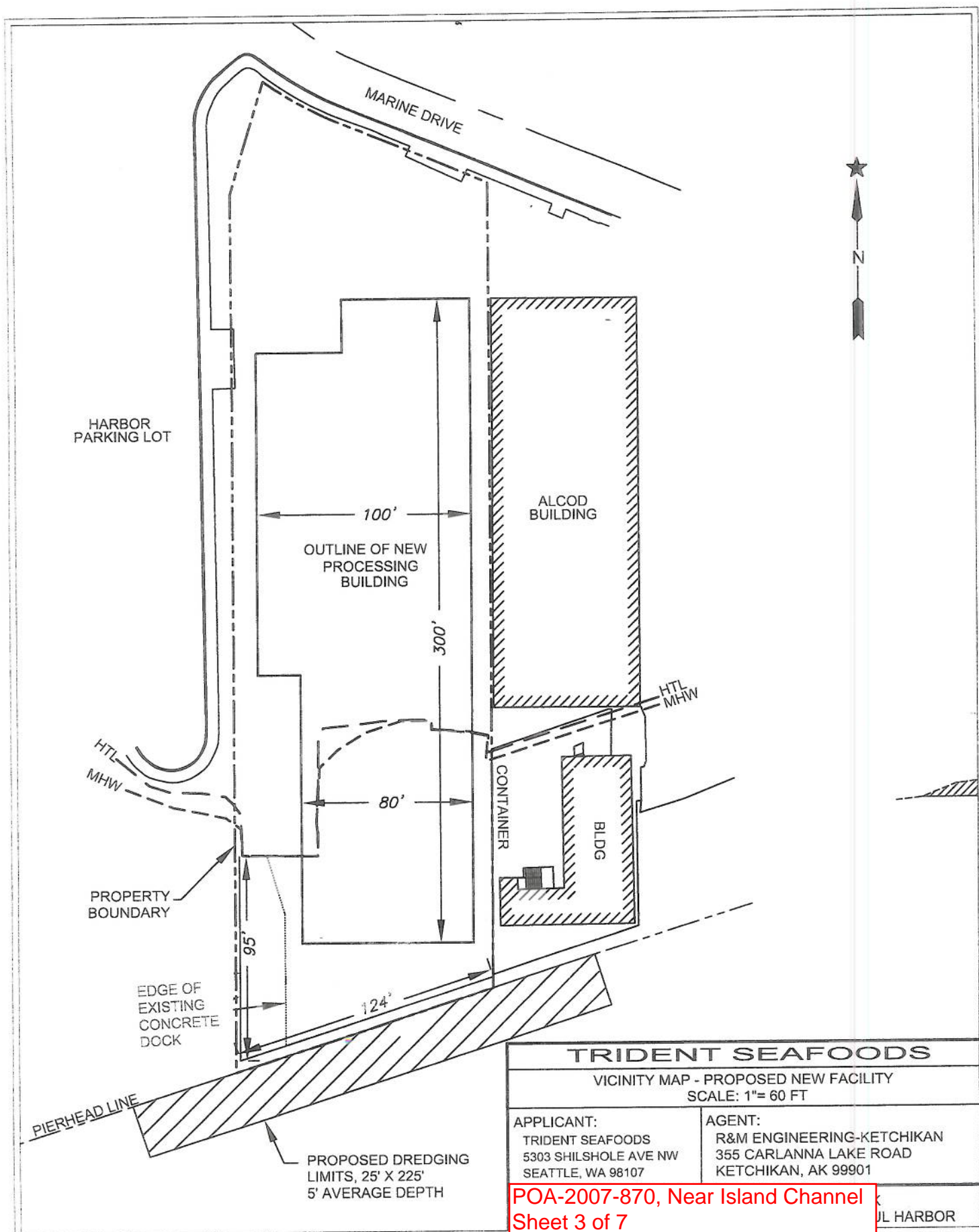
VICINITY MAP
SCALE: 1"= 200 FT

APPLICANT:
TRIDENT SEAFOODS
5303 SHILSHOLE AVE NW
SEATTLE, WA 98107

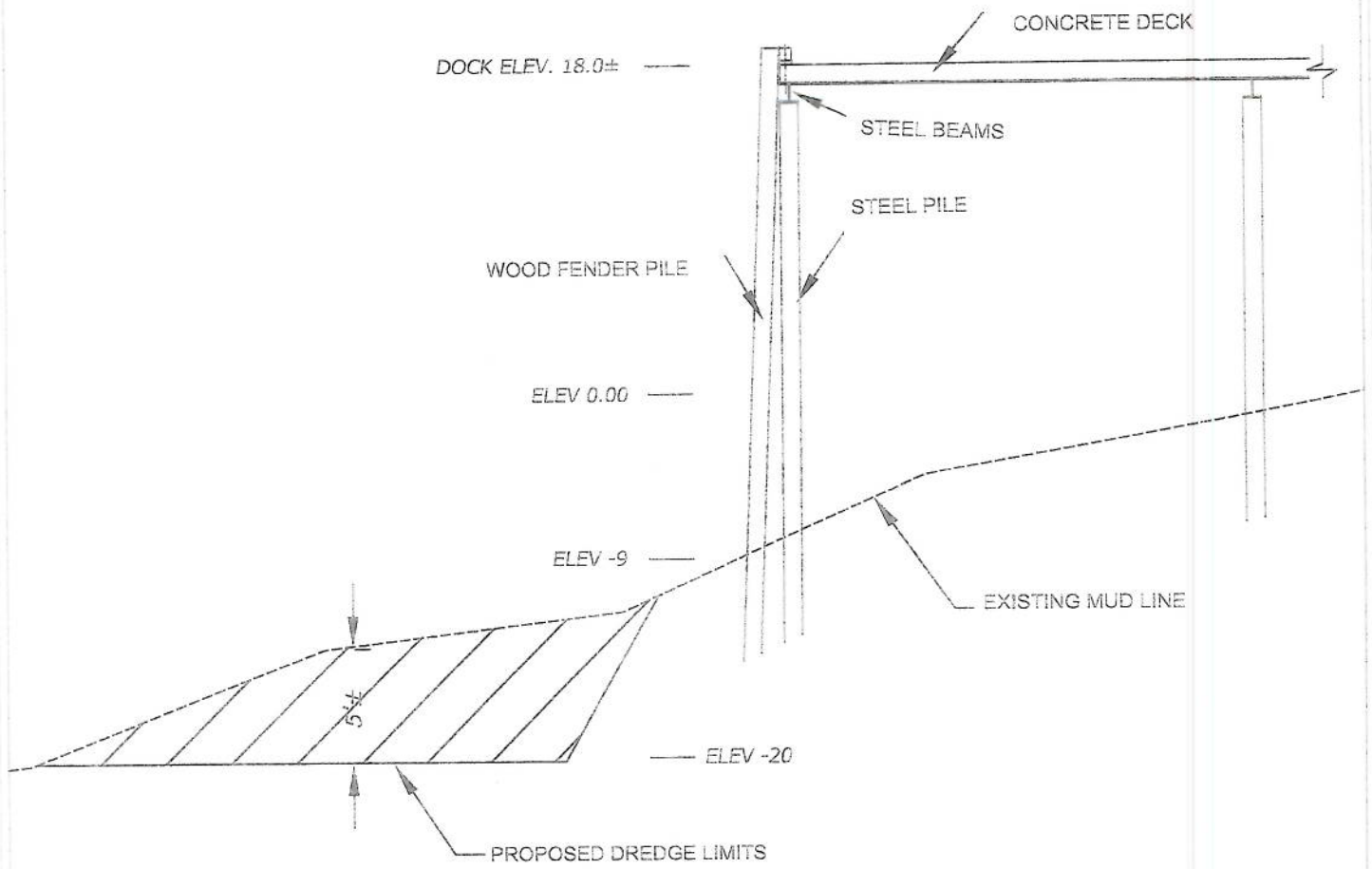
AGENT:
R&M ENGINEERING-KETCHIKAN
355 CARLANNA LAKE ROAD
KETCHIKAN, AK 99901

POA-2007-870, Near Island Channel
Sheet 1 of 7
January 21, 2015
Trident Seafoods Corporation

L HARBOR



POA-2007-870, Near Island Channel
Sheet 3 of 7
January 21, 2015
Trident Seafoods Corporation



TYPICAL SECTION

Tidal Data	
HTL	13.4'
MLW	7.4'
MLLW	0.00'
ELW	-3.1'

DREGE AREA 25'X225'
 AVERAGE DEPTH 5'
 VOLUME = 1350 CUBIC YARDS

TRIDENT SEAFOODS	
PROPOSED TYPICAL SECTION SCALE: 1"= 10 FT	
APPLICANT: TRIDENT SEAFOODS 5303 SHILSHOLE AVE NW	AGENT: R&M ENGINEERING-KETCHIKAN 355 CARLANNA LAKE ROAD KETCHIKAN, AK 99901
L HARBOR	

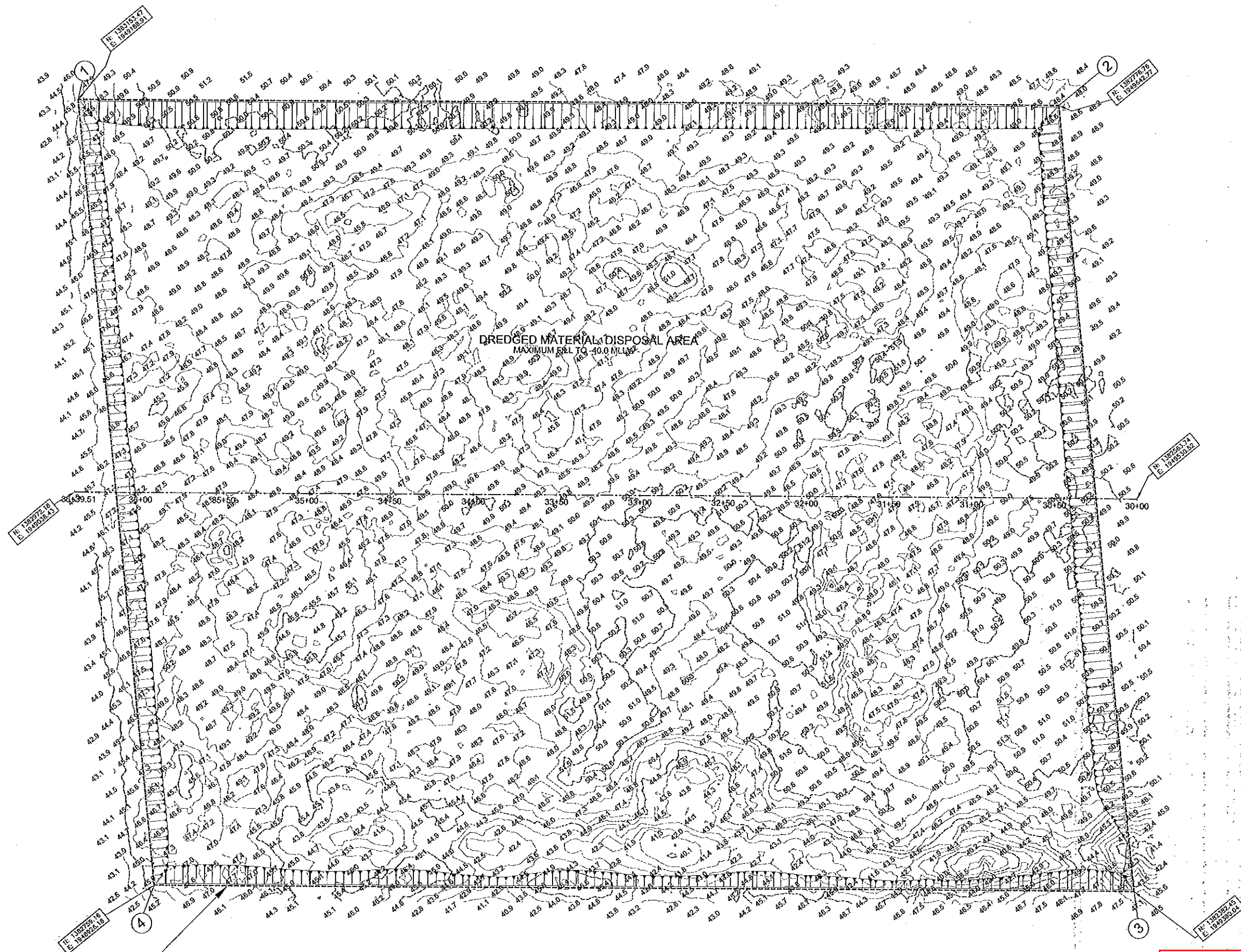
POA-2007-870, Near Island Channel
 Sheet 4 of 7
 January 21, 2015
 Trident Seafoods Corporation



Tidal Data	
HTL	15.4'
MLW	7.4'
MLLW	3.00'
ELW	-8.1'

1"=1,600'

TRIDENT SEAFOODS	
St. Herman Harbor Disposal Area	
PROJECT NO.	40573
POA-2007-870, Near Island Channel	ST. HERMAN ROAD
Sheet 5 of 7	
January 21, 2015	
Trident Seafoods Corporation	ST. HERMAN HARBOR

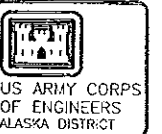


PROJECT LIMITS
SEE AWARD DRAWINGS SHEET C-103

DISPOSAL AREA PLAN SURVEYED 10/11/2013

SCALE 1" = 30'

POA-2007-870, Near Island Channel
Sheet 7 of 7
January 21, 2015
Trident Seafoods Corporation



US ARMY CORPS
OF ENGINEERS
ALASKA DISTRICT

Contract No.	City	State	Year	Project	Design	Drawn	Check	Scale	Date
W160110-07-0-0018	SEATTLE	WA	2015	WESTERN MARINE CONSTRUCTION					

12/20/13
Drawn: AS DROWN
Per Scale: 1" = 30' (2" x 4" min)
Date: 12-13 Kodiak Harbor
Drawing #: 3156-13
KOD009

KODIAK, ALASKA
ENTRANCE CHANNEL DREDGING
HYDRAULICS AND HYDROLOGY
SURVEY PLANS
KODIAK POST DREDGE FINAL